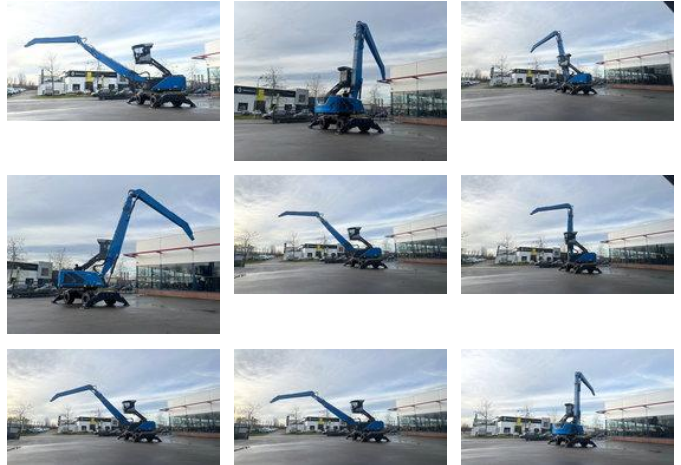




## Fuchs MHL 350 G ARM 16.2 METER

### General features

Price	Price on request
Brand	Fuchs
Subcategory	Material handler
Construction year	2025
Hourmeter reading	5
Condition	Used
General condition	Very good
Fuel	Diesel
Emission class	stage_4
Reference	9104



# Fuchs MHL 350 G ARM 16.2 METER

## Technical specifications

Engine output

160kw

## Accessories

- Cabin
- 
- 
- Reversing camera
- Radio/CD player
- Particulate filter
- Centralization of undercarriage lubrication points
- Dual tires - solid rubber with spacer ring 12.00-20