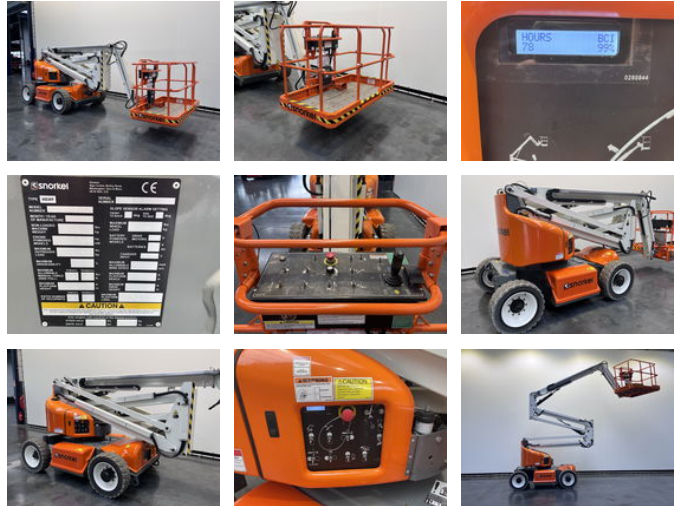




Snorkel A 46 JE

General features

Price	€ 38.500
Brand	Snorkel
Subcategory	Articulated boom lift wheeled
Construction year	2020
Hourmeter reading	78
Condition	Used
General condition	Very good
Fuel	Electric
Reference	6970



Characteristics

Empty weight	6.710kg
Load capacity	227kg
Lifting capacity	227kg

Snorkel A 46 JE

Description

Specifications Max. working height 16.0m Max. platform height 14.0m Max. horizontal reach 7.35m Clearance height at max. outreach 7.46m Platform size 1.0m x 1.83m Chassis width 1.7m Overall length 5.6m Stowed height 2.0m Ground clearance 152mm Platform capacity (SWL) 227kg Max. drive height 14.0m Max. wind speed 12.5m/s Max. drive speed (elevated) 0.8km/h Max. drive speed (stowed) 5.1 km/h Raise / lower time 99 / 92 seconds Gradeability 20% Jib length 1.5m Jib arc 140° Superstructure rotation 360° non continuous Tailswing 0m Inside turning radius 0.6m Outside turning radius 3.0m Tires Non-marking IN240/55D 17.5 Controls proportional Drive system 2 wheel drive Power source 8 x 6V batteries Weight 6710 kg

Accessories

-
-
-
-
-
- Particulate filter